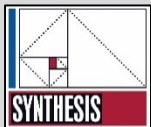




Capital Project Update

December 12th, 2016



Jim Graham, RA
Principal
Synthesis Architects

Bob Abromaitis
Project Manager/Senior Engineer
M/E Engineering



Priorities

1 Infrastructure (Project 1)

- Identified in the NYSED Building Condition Survey:
 - Life safety
 - Occupant health and well-being
 - Building systems and envelope integrity

2 Safety and Security (Project 2)

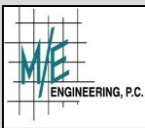
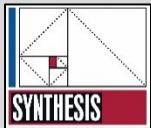
- Building security
- Traffic and pedestrian safety

3. Improvements to Educational Program (Project 3)

- Reconfiguration and/or modernization
- Technology enhancements
- Contingent upon Project 1

4. Long Range Organizational Improvements (Project 4)

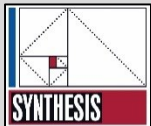
- Relocation of services, reconfiguration and/or modernization





Cost of Work

- Cost of Work Includes
 - Hazardous Material Abatement
 - Identified Scope of Work
 - Design and Construction Contingency
 - Escalation
 - Incidentals

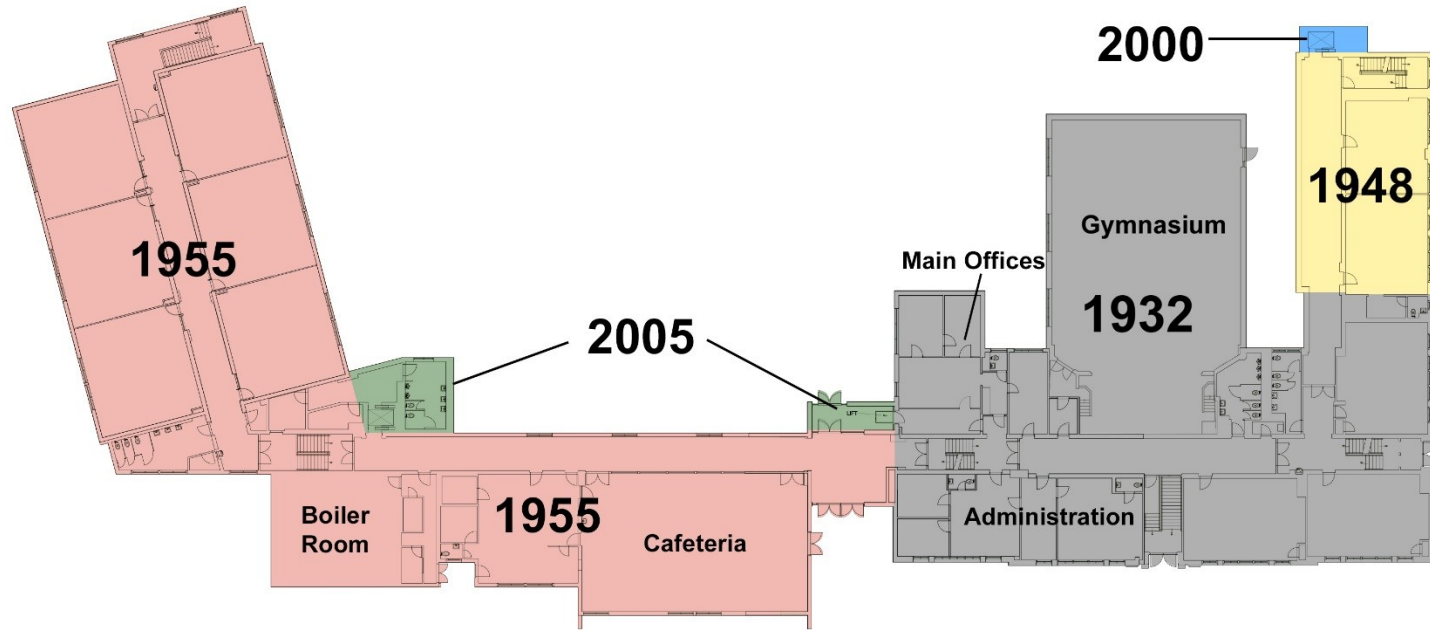




Elementary

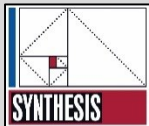
1. Infrastructure - Project 1

- Replace failing sidewalks
- Repair failing exterior walls
- Replace exterior doors
- Rebuild exterior stairs and ramps
- Replace several areas of roof
- Replace all electrical distribution and branch circuiting
- Replace electrical service switch



- Replace hot water heaters
- Replace water distribution system mains
- Replace plumbing drainage mains, branches and stacks
- Replace plumbing fixtures and trim throughout
- Water pressure
- Septic system
- Replace air handling/ventilation equipment
- Replace all steam and condensate with hot water
- Boilers (Included above)

First Floor Plan



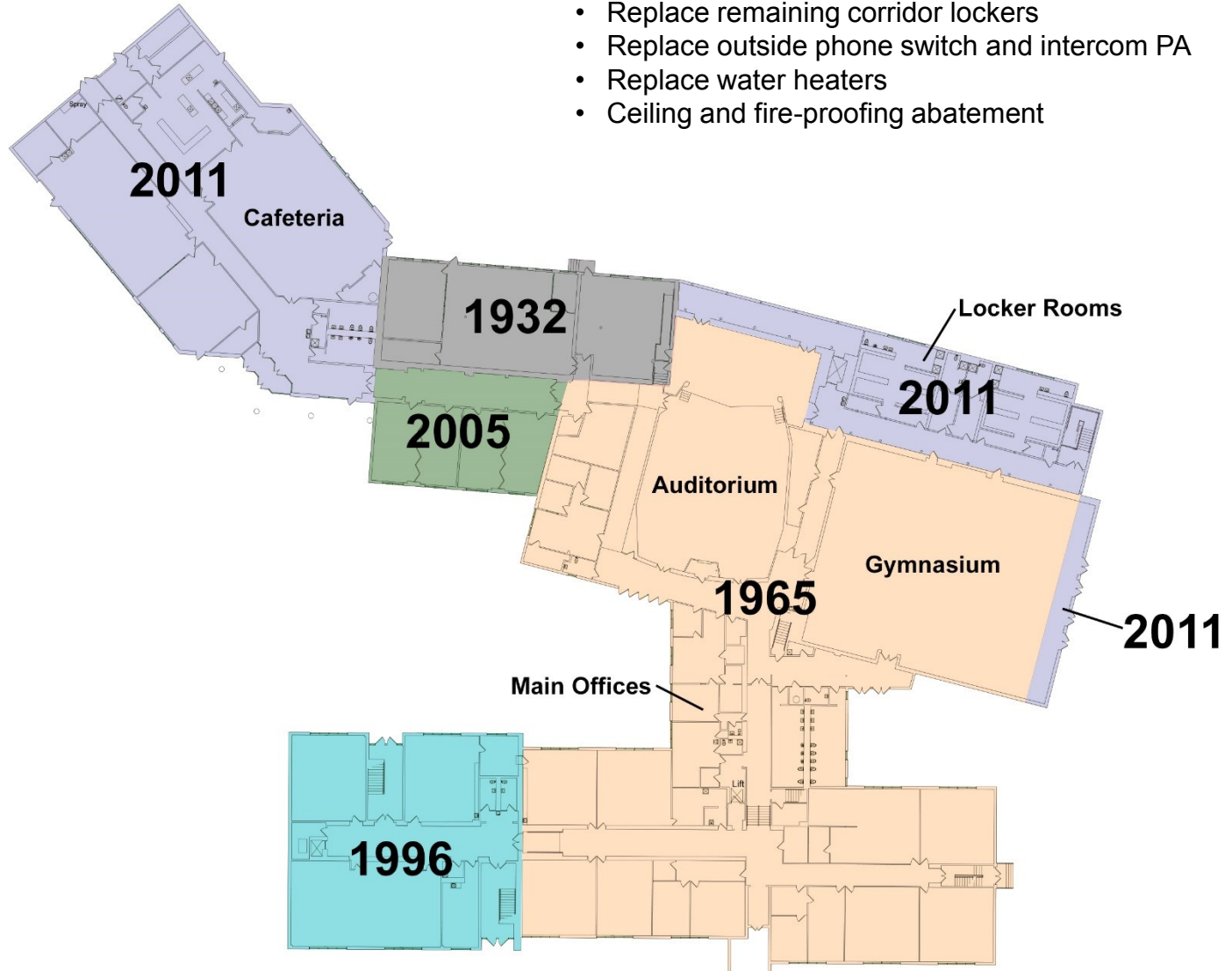


Secondary School

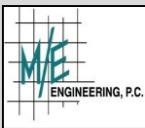
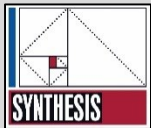
1. Infrastructure

- Project 1

- Repair failing exterior walls
- Replace limited exterior doors
- Recoat 2005 roof area
- Replace remaining corridor lockers
- Replace outside phone switch and intercom PA
- Replace water heaters
- Ceiling and fire-proofing abatement



First Floor Plan



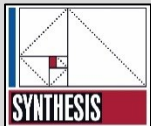
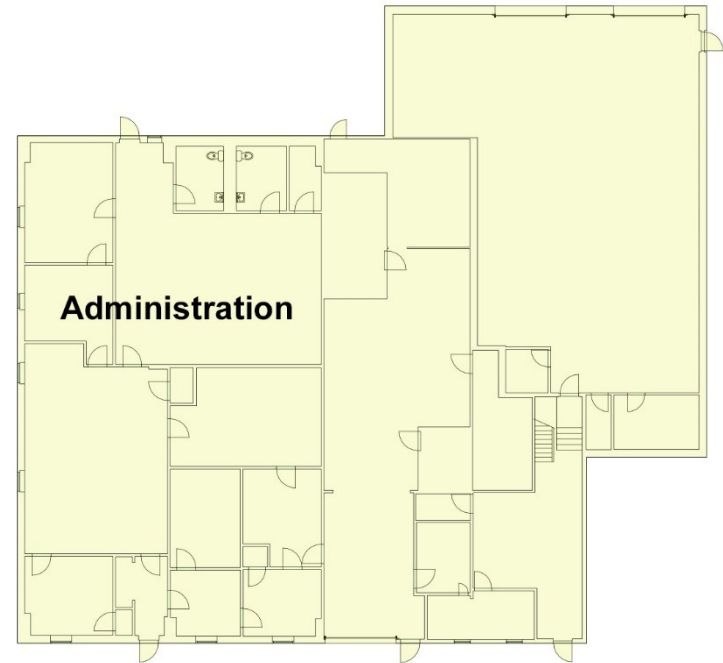


Bus Garage

1. Infrastructure

- Project 1

- Plumbing Fixtures
- Fire Alarm System
- Interior Accessible Route



Bus Garage Floor Plan



Infrastructure Cost of Work (Project 1)

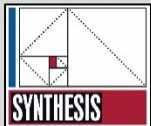
Campus

1. Infrastructure - Project 1

- Elementary School
 - Infrastructure \$6,300,000

- Secondary School
 - Infrastructure \$ 700,000

- Bus Garage
 - Infrastructure \$ 160,000

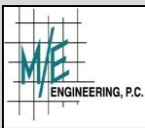
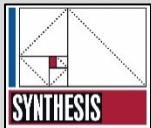
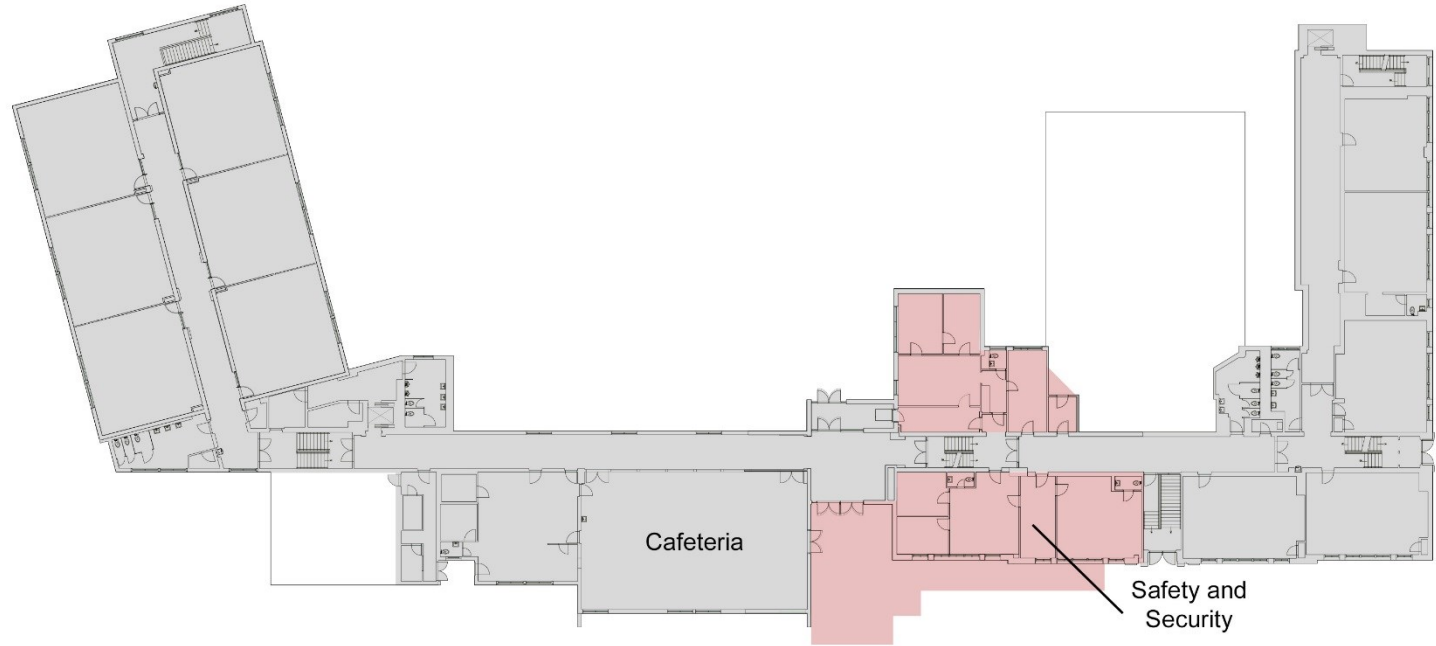


Total Cost for Infrastructure: \$7,160,000



Elementary

2. Safety and Security -Project 2

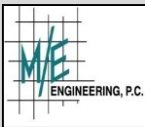
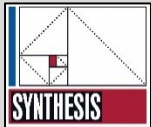
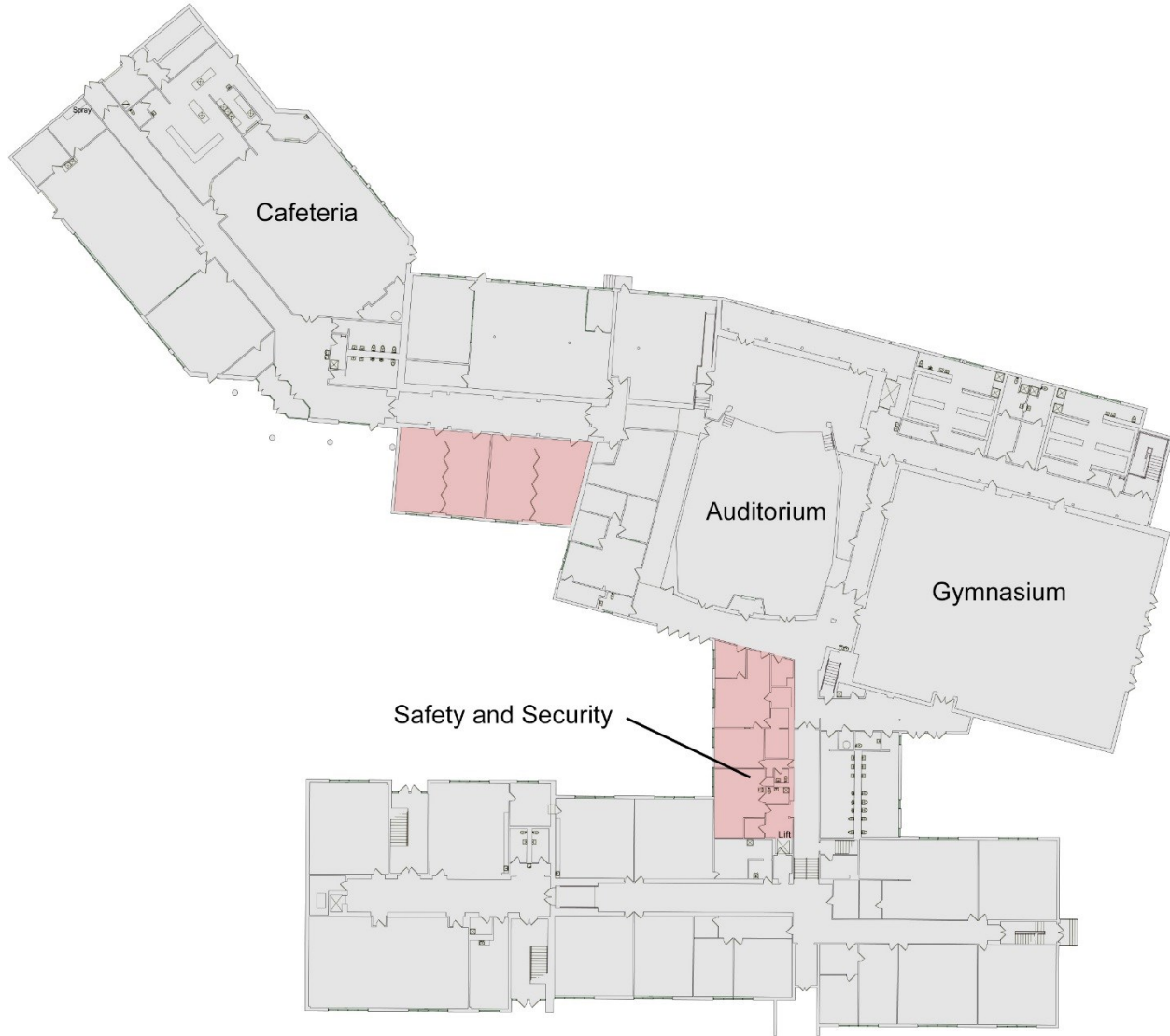


First Floor Plan



Secondary School

2. Safety and Security -Project 2



First Floor Plan



Safety and Security Cost of Work (Project 2)

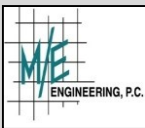
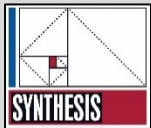
Campus

2.Safety and Security
-Project 2

- Elementary School
 - Safety and Security \$1,250,000

- Secondary School
 - Safety and Security \$ 900,000

Total Cost for Safety and Security: \$2,150,000



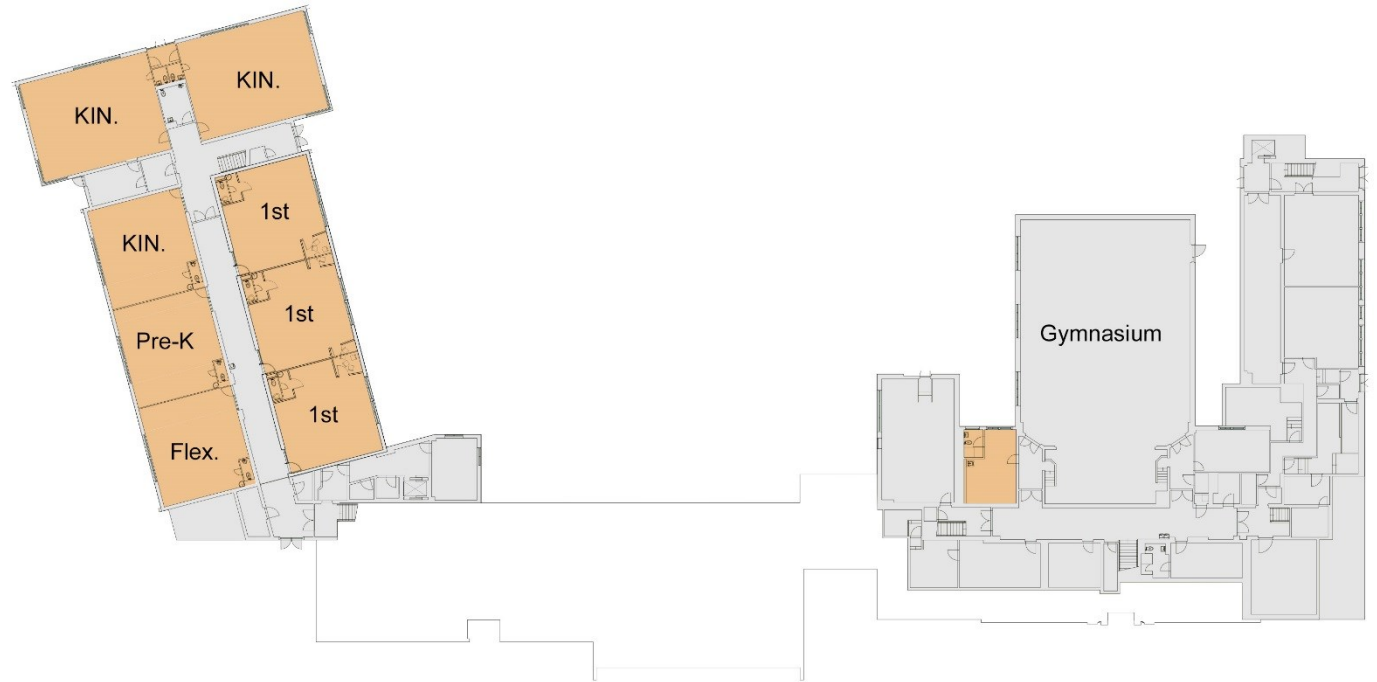


Reconfiguration / Modernization

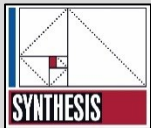
Elementary

- Renovate cafeteria for multi-use space
- Provide educational spaces that support more inclusive Spec. Ed.
- Provide professional planning spaces
- Improve opportunities for grade level collaboration (1-1-1, 2-2-2, through 5th)
- Improve early elementary access to support services (speech, resource)
- Create dedicated elementary science space

3.Educational Program
-Project 3



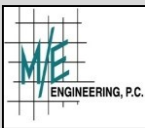
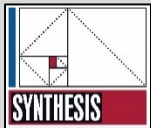
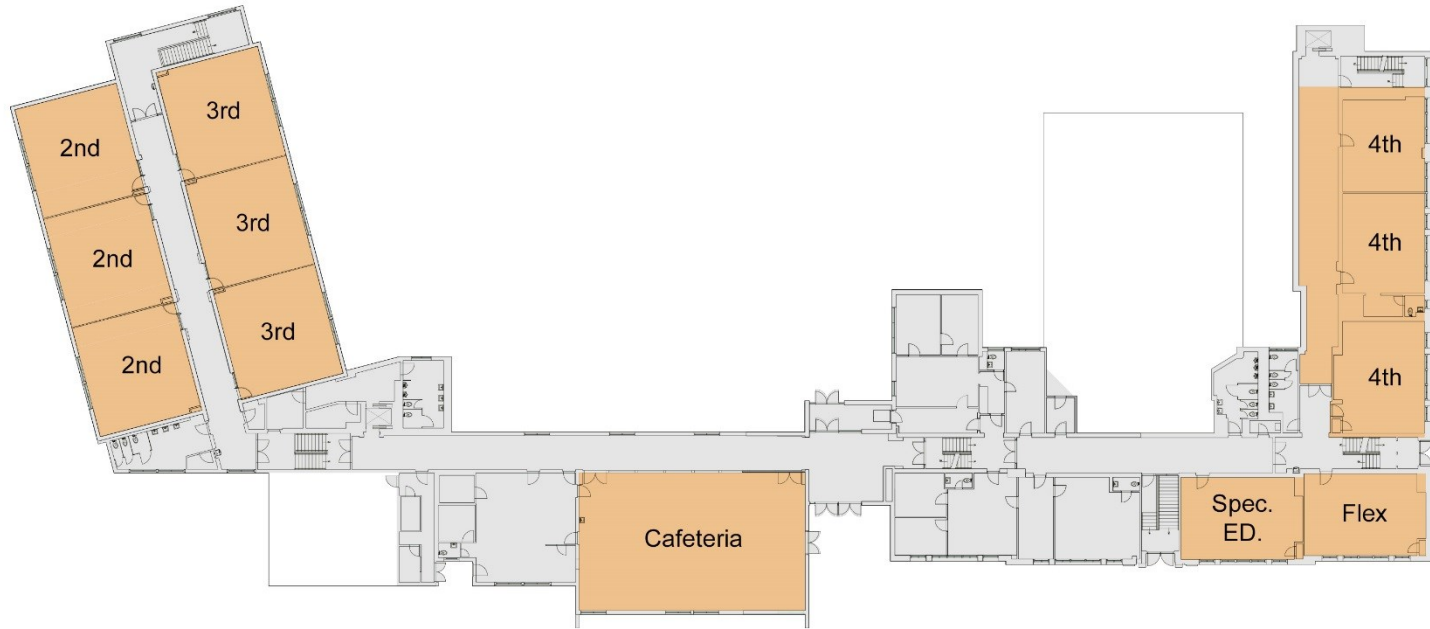
Lower Floor Plan





Elementary

2. Safety and Security -Project 2

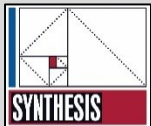
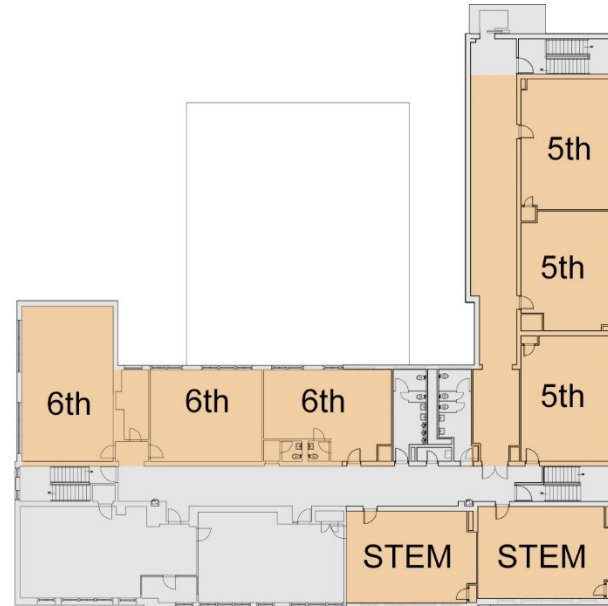


First Floor Plan



Elementary

3.Educational Program
-Project 3



Second Floor Plan

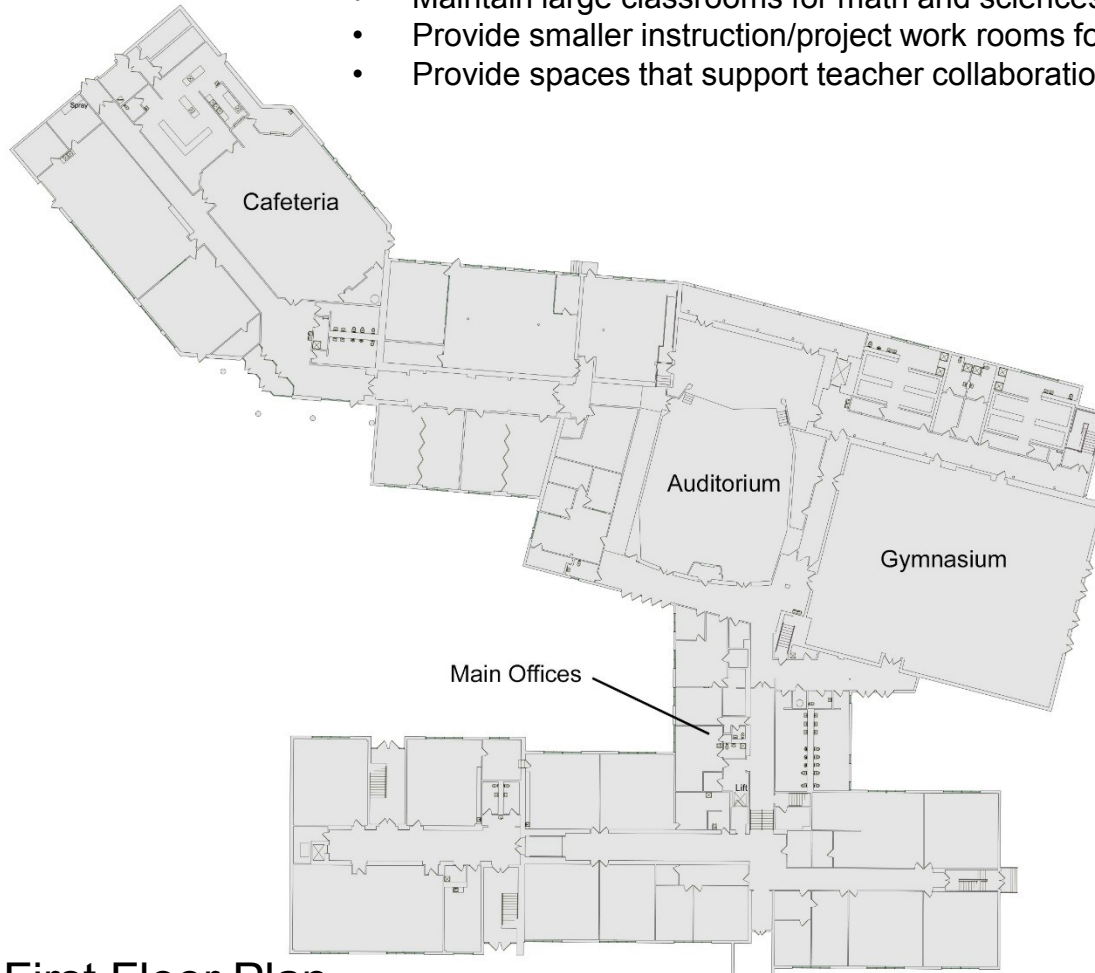


Reconfiguration / Modernization

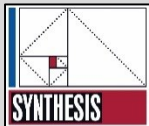
Secondary School

- Distance learning and improved community access
- Provide large group instruction area
- Reinforce 7-8 MS Wing, Separate 9-12 HS Wing
- Improve opportunities for small group and interdisciplinary collaboration
 - Co-locate support spaces and Spec. Ed.
 - Provide Spec. Ed. spaces that support project based learning
 - Maintain large classrooms for math and sciences
 - Provide smaller instruction/project work rooms for English and History
 - Provide spaces that support teacher collaboration

3.Educational Program -Project 3



First Floor Plan



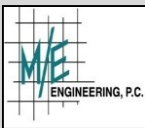
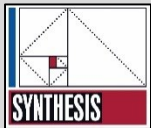


Secondary School

3.Educational Program -Project 3



Second Floor Plan





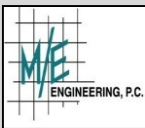
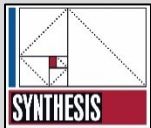
Educational Program Cost of Work (Project 3)

Campus

3. Educational Program -Project 3

- Elementary School
 - Educational Program \$ 4,500,000

Note: This work is contingent upon Project 1 Being Completed
- Secondary School
 - Educational Program \$ 275,000



Total Cost for Educational Program: \$4,775,000



Relocation / Modernization

Elementary

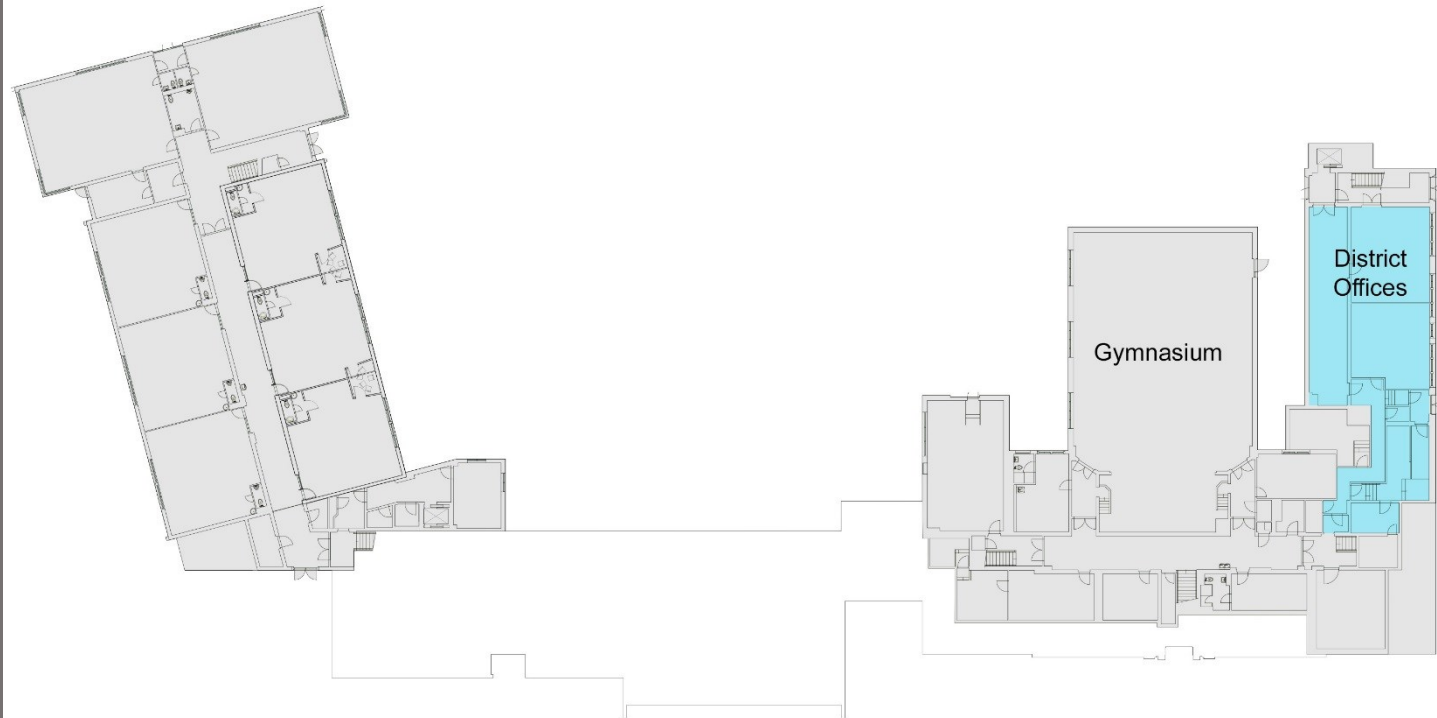
Administration

- Relocate District Administration onto school campus; look to maintain segregation of public from student areas
- Relocate Facility Department into secondary school
- Relocate IT Department into secondary school

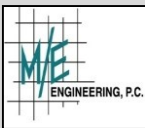
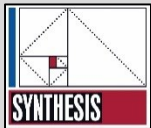
Transportation

- Provide Transportation Office and driver training facility in existing District Offices
- Provide wash bay

4. Organizational Improvements -Project 4



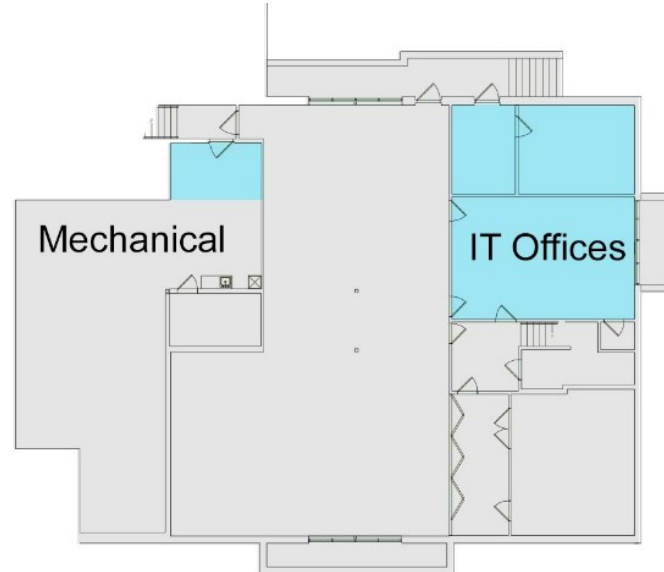
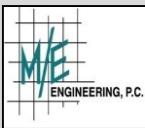
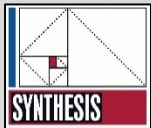
Lower Floor Plan





Secondary School

4.Organizational
Improvements
-Project 4

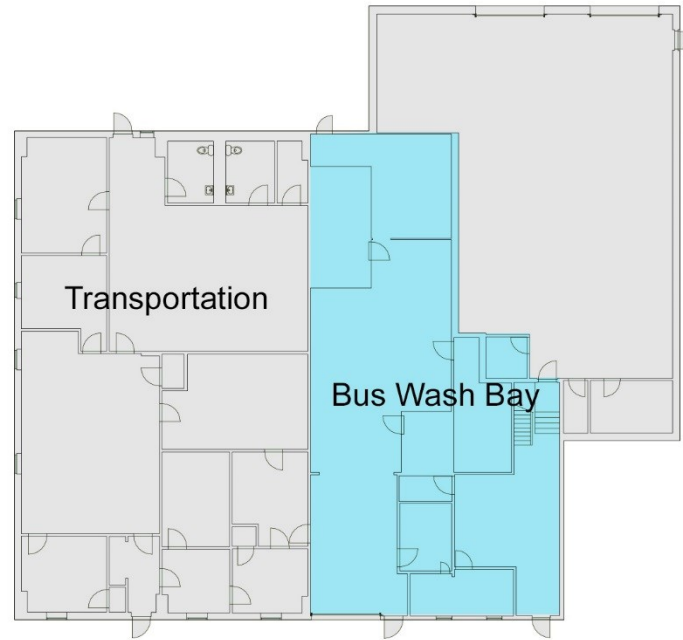
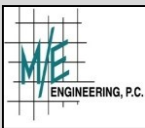
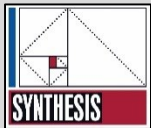


Basement Floor Plan



Bus Garage

4. Organizational
Improvements
-Project 4



Bus Garage Floor Plan



Organizational Improvements Cost of Work (Project 4)

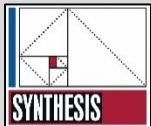
Campus

- Elementary School
 - Organizational Improvement \$ 385,000

- Secondary School
 - Organizational Improvements \$ 190,000

- Bus Garage
 - Organizational Improvements \$ 375,000

4.Organizational
Improvements
-Project 4



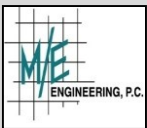
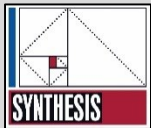
Total Cost for Organiz. Improvements: \$ 950,000



Campus



- Parking Close to Building
- Traffic and Student Circulation Issues
- Lack of Clear Wayfinding



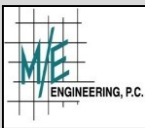
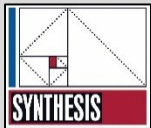


Site and Safety Improvements

Campus

1. Infrastructure
- Project 1
2. Safety and Security
- Project 2
3. Educational Program
- Project 3
4. Organizational Improvements
- Project 4

- Overall Site / Safety Improvements
 - Range Between \$1,000,000 to 2,000,000





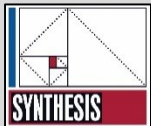
Summary Cost of Work

Campus

- 1. Infrastructure
- Project 1
- 2. Safety and Security
- Project 2
- 3. Educational Program
- Project 3
- 4. Organizational Improvements
- Project 4

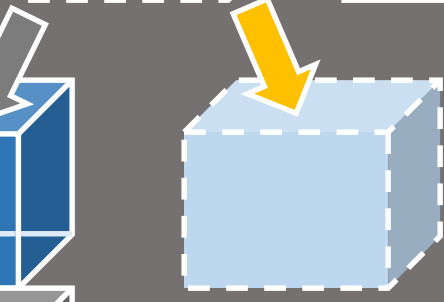
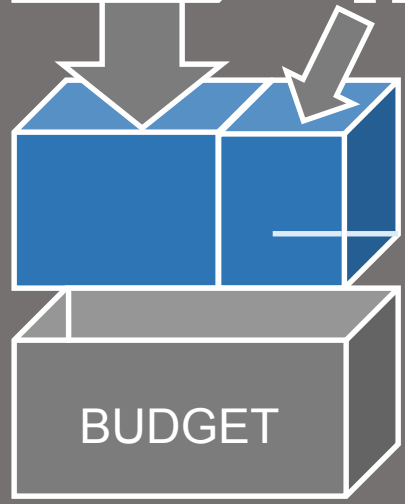
• Elementary School		
• Infrastructure (Project 1)		\$ 6,300,000
• Safety and Security (Project 2)		\$ 1,250,000
• Educational Program (Project 3)		\$ 4,500,000
• Organiz. Improvements (Project 4)		<u>\$ 385,000</u>
	•	\$12,435,000
• Secondary School		
• Infrastructure (Project 1)		\$ 700,000
• Safety and Security (Project 2)		\$ 900,000
• Educational Program (Project 3)		\$ 275,000
• Organiz. Improvements (Project 4)		<u>\$ 190,000</u>
	•	\$ 2,065,000
• Bus Garage		
• Infrastructure (Project 1)		\$ 160,000
• Organiz. Improvements (Project 4)		<u>\$ 375,000</u>
	•	\$ 535,000
• Site Safety and Security		\$ 1M to 2M TBD

Total Cost: \$16,035,000 to \$17,035,000



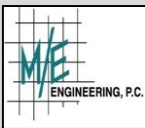
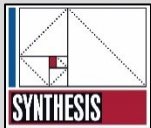


PRESENTED SCOPE



Deferred Wish List

- EXCEL Project
- Smart Schools
- Energy Performance Contract
- Future Capital Project





Overview of Pre-Referendum Process

